



The official employee newsletter of CSI since 1998

Week of July 7, 2014

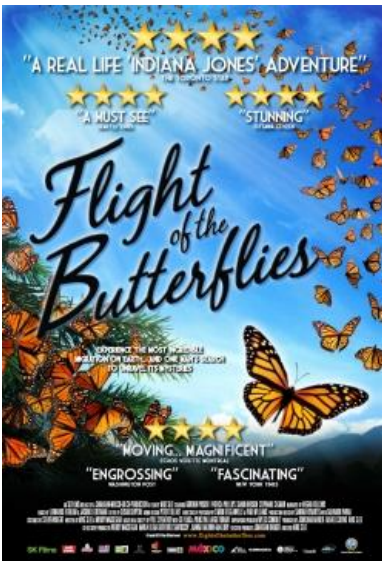
Table of Contents

Faulkner Planetarium Opens **THREE** New Shows!
The New On-line MBA Program from Idaho State University
July Issue of Vitality Table of Contents

Faulkner Planetarium Opens THREE New Shows!

Three new shows will open the first week of July and we have something for every age group.

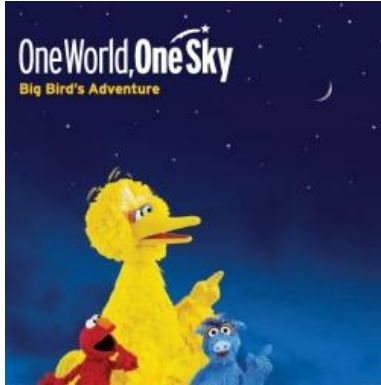
Flight of the Butterflies



The iconic monarch butterfly is a true marvel of nature. Weighing less than a penny, it makes one of the longest migrations on Earth across a continent, with pinpoint navigational accuracy, to a secluded place it has never been. Follow the monarchs' perilous and extraordinary journey and join hundreds of millions of real butterflies in the remote mountain peaks of Mexico. For the first time ever, look inside a chrysalis, thanks to advanced MRI and micro CT scans. Be captivated by the true and compelling story of an intrepid scientist's 40-year search to find their secret hideaway, with the help of citizen scientists across North America. Unravel the mysteries and experience the Flight of the Butterflies.

Showing at 2:30 pm Tuesdays through Saturdays, 8:00 pm Tuesdays and 7:00 pm Fridays.

One World, One Sky: Big Bird's Adventure



Join Sesame Street's Big Bird, Elmo, and Elmo's friend from faraway China, Hu Hu Zhu, as they learn about the sky in this fun adventure, best suited for children ages 4-6. The three friends learn about sunsets and finding starry patterns like the Big Dipper in the night sky.

Using their imaginations, Elmo and Hu Hu Zhu even travel to the Moon, where they discover they can jump higher and kick a soccer ball farther, but can't fly a kite, and must wear space helmets to breathe. Returning to Earth, they realize they can see the same stars from their homes in the United

States and China.

Showing at 1:30 pm Thursdays and Saturdays.

Pink Floyd: The Wall



Pink Floyd's concept album comes to life on the planetarium dome in the fictional story of Pink, a world-renowned, but reluctant, rock star. His father's death in World War II, before Pink's birth, and subsequent upbringing by his over-protective mother, propels him into a spiral of ever-increasing isolation. As Pink's marriage crumbles, he retreats into a world of addiction and begins to build his "wall" to isolate himself physically and mentally from the outside world. As he places the final brick in the wall his descent into mental illness is complete. Imprisoned in his mind, Pink envisions himself as a fascist leader, the likes of which deprived him of his father, yet he begins to question if he's done the right thing by isolating himself. Pink's delusions culminate as he puts himself on trial in an effort to tear down the wall.

Due to mature content this program is not recommended for audiences under 13.

Showing at 8:00 pm Fridays and Saturdays.

The New On-line MBA Program from Idaho State University

ISU now offers a fully on-line MBA program to holders of business and non-business bachelor degrees. The program is tailored for working professionals and is highly flexible. It may be completed in as little as one year or enrollees may take up to eight years to complete the program. Beginning in the Fall of 2014, this program will be available for part-time students.

Join Heidi Wadsworth, the Director of Graduate Studies from ISU's College of Business, on July 15th from 5:00 to 7:30 pm in room 276 of the Taylor building on the College of

Southern Idaho campus as she introduces this program to the Magic Valley. For more information contact the ISU office at 736-2101.

Maggi Seipel
ISU – Twin Falls

July Issue of Vitality Table of Contents

- No dairy? No problem.
- Dress for exercise success
- Asleep but dangerous: Sleepwalking in adults
- Get answer to make an informed decision about surgery
- Questions to ask before your medical test
- From the schoolyard to the boardroom. Hint:
 - Everybody has a skill
 - Recess helps you grow
 - Beware of bullies
 - Admire the right people
 - Sit up straight
- And more!

Find a copy of this publication about health, happiness and productivity in your workplace. Ask a front desk staff where that is located.

The eNotes is a weekly newsletter containing news and events both on campus and in the community of general interest to CSI employees. Submit your news within the body of an email message (no attached fliers please) to eNotes@csi.edu and enter the word “eNotes” in the subject line. Respond to the eNotes by calling HR at 732-6269 or by email to hr@csi.edu.